



HOMEWORK POLICY

Date of Last Review	November 2017
Date of Next Review	November 2018
Review period	1 Year

HOMEWORK POLICY

A homework policy is a partnership agreement between the school, the pupil and the parent/guardian. Therefore in developing this, it is important that the school lays out its expectations and ensures parents/guardians are clear about what these expectations are. Homework is an essential part of our school approach to helping students learn, think and work effectively.

Purposes

- Encouraging pupils to develop the skills, confidence and motivation needed to study effectively as independent learners.
- Consolidating and reinforcing understanding, skills and attributes developed at school.
- Extending school learning through a range of learning activities sustainable in and beyond the classroom environment.
- Encouraging and sustaining the involvement of parents', carers and other adults in the management of pupils learning

Amount and types of Homework

Regular homework should be set relating to the topic being taught in class. Too much and unnecessary homework is to be avoided.

- Teachers are responsible for ensuring that homework is set and marked regularly.
- Activities set should be varied and might include reading, investigating, research, preparing a presentation or problem solving.
- All pupils are expected to complete their homework, no matter what their level of ability.

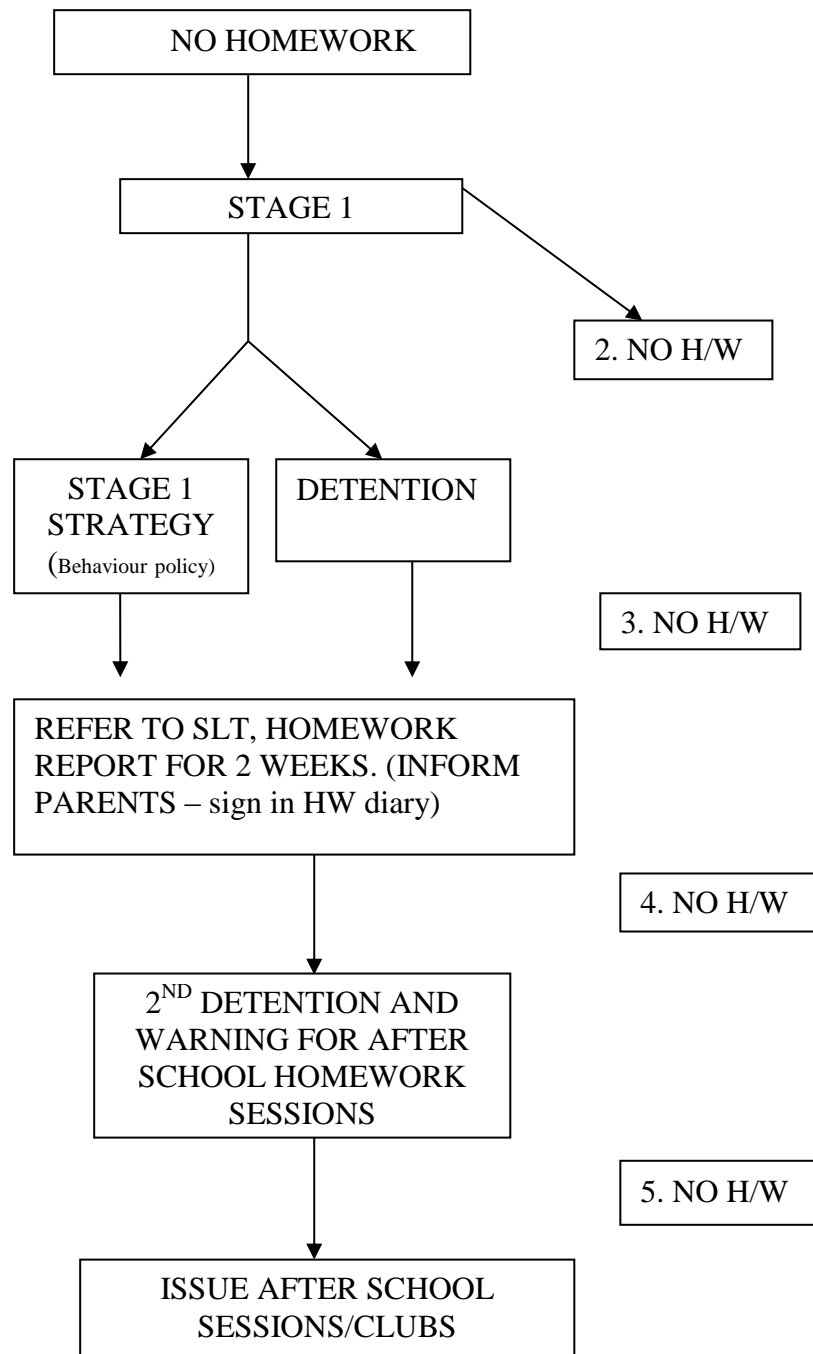
Marking Homework

Homework should be marked and returned to pupils within two weeks in accordance with the school marking and assessment policy.

Procedures for pupils not doing homework

Homework is compulsory for all students. If a pupil fails to do homework teachers should use the procedures laid out in the flow chart below:

Flow chart for No Homework



If after the second detention a student continues to fail in completing HW, she should be enrolled for mandatory after school homework sessions. Parents will be informed of the sessions and cost in advance.